

## THINGS TO DO EVENINGS OF WEST COAST CONFERENCE ATTRACTIONS LOCATED IN SALEM

### SALEM'S RIVERFRONT CAROUSEL

[www.salemcarousel.org](http://www.salemcarousel.org)



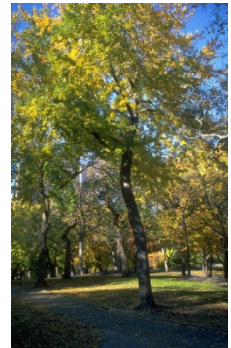
Salem's Riverfront Carousel project was inspired by a trip Hazel Patton took in 1996 to visit family in Missoula, Montana. While there she went to see the first old-world style carousel built in the U.S. since the Great Depression. When Hazel rode the carousel, she knew it was more than the music and motion of the ornately carved and hand-painted horses that created magic in Missoula. The real beauty was how the carousel united the community by combining history with the creative talents of Missoula's citizens. She knew that the citizens of Salem could bring similar magic to the banks of the Willamette River.

### RIVERFRONT PARK

[www.cityofsalem.net](http://www.cityofsalem.net)

Under the Residents dropdown, select "Parks", then "Park Tours" and then "Riverfront Park".

Riverfront Park is a 23-acre park located in downtown Salem along the Willamette River. Riverfront Park has an amphitheater, play equipment, a covered Pavillion and large grassy areas. This beautiful park is home to Salem's Riverfront Carousel which opened in June 2001, A.C. Gilbert Discovery Village, and the EcoEarth Globe which was officially opened June 30, 2003.



Riverfront is home to a number of annual events, including the World Beat Festival, 4th of July Celebration, Christmas tree lighting, and many various walk/run events.

### THE HISTORIC ELSINORE THEATRE

[www.elsinoretheatre.com](http://www.elsinoretheatre.com)



If you have not experienced the Historic Elsinore Theatre since our renovation, you are missing one of the most magnificent historic theatres in the nation. Built in 1926 and restored in 2004, it is truly a place of Grandeur and is the last remaining example of a Tudor Gothic atmospheric theatre in North America. With its 30 foot high Gothic lobby, exquisite stained glass windows, 24 foot tall murals of *Romeo and Juliet* and *Macbeth's Witches* along with the 1,300 seat auditorium it is truly a Theatre to experience.

Each season the Theatre offers our community a variety of wonderful shows that delight and entertain. You can view a complete calendar of events on the "calendar" section of the web page.

## **HISTORIC DEEPWOOD ESTATE**

[www.historicdeepwoodestate.org](http://www.historicdeepwoodestate.org)



Historic Deepwood Estate is an 1894 Queen Anne Victorian Home situated on approximately 4 acres of manicured gardens and nature trails set in the heart of Salem near its downtown core. The home was placed on the National Register of Historic Homes in 1973. The museum is operated by the Friends of Deepwood, a non-profit organization created to disseminate information about the home and document the life in Victorian times.

In 2002, Sunset Magazine named Deepwood as one of the four “Best Historic Homes” in its “Best of the West” section. Experiencing Salem’s history and learning of Deepwood’s unique architectural features such as its Povey Brothers stained glass and Eastern golden oak are the heart of its tours conducted on a year round basis. The gardens, partially designed by Elizabeth Lord and Edith Schryer, are open daily, dawn to dusk free of charge. Group tours of the garden can be arranged in advance.

## **THE SALEM PUBLIC LIBRARY**

[www.salemlibrary.org](http://www.salemlibrary.org)

The Salem Public Library hosts a variety of events at the downtown Salem location. The events range from live music to lectures to how-to classes on a variety of disciplines. The summer schedule is unavailable at this time. Please check their website for updated information under the Event and Programs section of the website.



## **CAPITOL CITY THEATRE**

[www.capitolcitytheater.com](http://www.capitolcitytheater.com)

Phone: 503-689-2366

Email: [chipconrad@gmail.com](mailto:chipconrad@gmail.com)

Address: 189 Liberty St NE, Salem OR 97301



Welcome to Capitol City Theater located in the Historic Reed Opera House. CCT is Salem’s best stop for live comedy every weekend. Our eclectic menu of food, soda, beer and wine is the icing on the cake of this ALL AGES venue. We are dedicated to finding, growing and presenting the Northwest’s best live entertainment. Not only are our eyes focused locally but globally as well by donating a percent of our profit to Senai Global an organization committed to clean water projects in Africa.

## **BUSH'S PASTURE PARK**

<http://www.cityofsalem.net>

Under the "Residents" dropdown menu select "Parks" and scroll down the page until you find the link to "Bush House" under the Historic Facilities section.



This is a 90.5 acre park that is blanketed with trees and open meadows. There are many fields for playing Frisbee or other types of drop in use. There are also 4 areas with play equipment for children. There are many trails perfect for walking, jogging, or running. Bush's Pasture Park facilities are listed below.

4 Lighted tennis courts

Restrooms

Playground areas

Drinking fountains

Perennial, annual, tulip beds

Reservable Gazebo

Bush greenhouse, gardens

Bush Barn Art Center & Gallery

Reservable ball field

Crooked House Play area

Walking/Jogging/Bike paths

Picnic areas/tables/benches

Municipal Rose Garden

Horseshoe Courts

[Historic Bush Museum](#)

Soap Box Derby track

## **WILLAMETTE QUEEN STERNWHEELER**

[www.willamettequeen.com](http://www.willamettequeen.com)

Sternwheelers were once the main mode of transportation on the Willamette River. Sternwheeler Excursions Inc. is now operating a 87 foot, 86 ton, twin paddle-wheeler year-round from Riverfront Park in downtown Salem, offering lunch, dinner and sightseeing excursions.



The "Willamette Queen" was designed as a scaled down likeness of the former Mississippi and Yukon Territory Riverboats with paddles that really do propel her. Built in Newport, Oregon, in 1990, she has a Coast Guard approved capacity of 90.

Step back in time and enjoy the unchanged natural beauty of the Willamette River aboard our authentic Sternwheeler.

## SHOPPING IN SALEM and VICINTY

**Salem** has three large shopping malls, two in downtown Salem and one on nearby Lancaster Drive Salem. The Salem downtown area also has many specialty and boutique stores to discover. For more information regarding shopping in Salem go to:



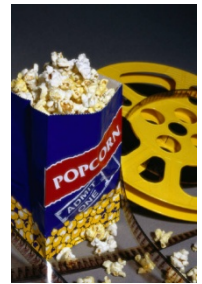
[www.godowntownsaalem.com](http://www.godowntownsaalem.com) and [www.lancastermall.com](http://www.lancastermall.com)

**Woodburn**, a city located approximately 30 minutes north of Salem is the home of the Woodburn Company Stores outlet mall. This mall showcases designer and name brand clothing at a reduced Price.

[www.woodburncompanystores.com](http://www.woodburncompanystores.com)

## MOVIE THEATERS

Salem has many movie theaters to choose from. Whether you prefer first run movies, movie theaters with food service or a movie theater that specializes in art, foreign and independent films, Salem has the perfect choice for you.



Salem Cinema – [www.salemcinema.com](http://www.salemcinema.com)  
Cinebarre Salem 7 – <http://cinebarre.com>  
Northern Lights – <http://northernlightstheatrepub.com>  
Regal Movie Theaters – [www.regmovies.com](http://www.regmovies.com)

## DINING IN SALEM

The Salem area has a wonderful mix of all types of restaurants and foods ranging from fine dining to a fabulous 50's burger dive. The publication Go Downtown Salem has many of our wonderful restaurants listed on their website, but we will have an additional list of our personal favorites available at the conference location. Bon Appetite!



[www.godowntownsaalem.com](http://www.godowntownsaalem.com)